



Please indicate your desired retrofit configuration:

WILA New Standard

WILA American Style

Crowning/Die Holder

Clamping

## Machine Retrofit Information Page

### Customer Information

Company \_\_\_\_\_

Address \_\_\_\_\_

City \_\_\_\_\_

State/Province \_\_\_\_\_ Zip \_\_\_\_\_

Country \_\_\_\_\_

Phone Number \_\_\_\_\_

Contact Name \_\_\_\_\_

Email Address \_\_\_\_\_

### Machine Information

Manufacturer \_\_\_\_\_

Tonnage \_\_\_\_\_

Model \_\_\_\_\_

Machine Open (inches) **A** = \_\_\_\_\_

Machine Stroke (inches) \_\_\_\_\_

Lower Beam Length (inches) **C** = \_\_\_\_\_

Upper Beam length (inches) **D** = \_\_\_\_\_

Table Width (inches) **E** = \_\_\_\_\_

Existing Ram Type:

American clamp plates

European Z1 (7mm offset)

European Z2 (20mm offset)

Other \_\_\_\_\_

Current Die Holder Height \_\_\_\_\_

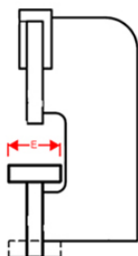
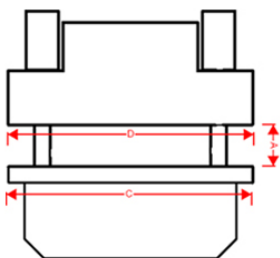
Current Die Holder Width \_\_\_\_\_

How is your current die holder mounted to the bed?

With tang to groove in bed

Bolt down

Flat bed with clamp plates



### WILA USA

7380 Coca Cola Dr.

Hanover, MD 21076

Phone: 443-459-5496

Email: [info@wilausa.com](mailto:info@wilausa.com)

[www.wilausa.com](http://www.wilausa.com)

